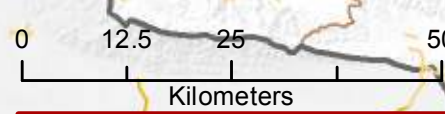
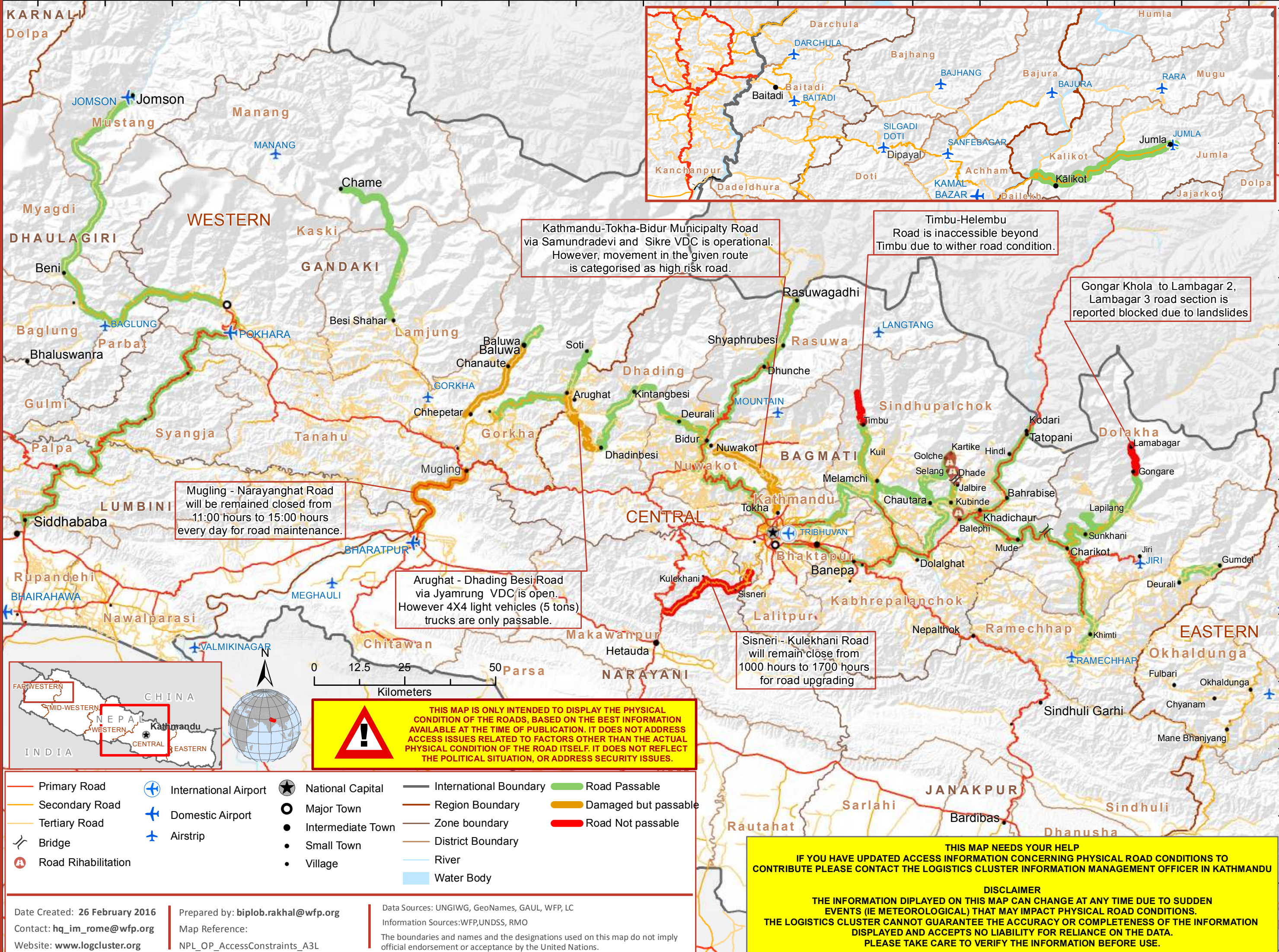


Nepal
Central Region - Access Constraints as of 26 February 2016



THIS MAP IS ONLY INTENDED TO DISPLAY THE PHYSICAL CONDITION OF THE ROADS, BASED ON THE BEST INFORMATION AVAILABLE AT THE TIME OF PUBLICATION. IT DOES NOT ADDRESS ACCESS ISSUES RELATED TO FACTORS OTHER THAN THE ACTUAL PHYSICAL CONDITION OF THE ROAD ITSELF. IT DOES NOT REFLECT THE POLITICAL SITUATION, OR ADDRESS SECURITY ISSUES.

- | | | | | |
|---------------------|-----------------------|-------------------|------------------------|----------------------|
| Primary Road | International Airport | National Capital | International Boundary | Road Passable |
| Secondary Road | Domestic Airport | Major Town | Region Boundary | Damaged but passable |
| Tertiary Road | Airstrip | Intermediate Town | Zone boundary | Road Not passable |
| Bridge | | Small Town | District Boundary | |
| Road Rehabilitation | | Village | River | |
| | | | Water Body | |

Date Created: 26 February 2016
 Contact: hq_im_rome@wfp.org
 Website: www.logcluster.org

Prepared by: biplob.rakhal@wfp.org
 Map Reference: NPL_OP_AccessConstraints_A3L

Data Sources: UNGIWG, GeoNames, GAUL, WFP, LC
 Information Sources: WFP, UNDS, RMO
 The boundaries and names and the designations used on this map do not imply official endorsement or acceptance by the United Nations.

THIS MAP NEEDS YOUR HELP
 IF YOU HAVE UPDATED ACCESS INFORMATION CONCERNING PHYSICAL ROAD CONDITIONS TO CONTRIBUTE PLEASE CONTACT THE LOGISTICS CLUSTER INFORMATION MANAGEMENT OFFICER IN KATHMANDU

DISCLAIMER
 THE INFORMATION DISPLAYED ON THIS MAP CAN CHANGE AT ANY TIME DUE TO SUDDEN EVENTS (IE METEOROLOGICAL) THAT MAY IMPACT PHYSICAL ROAD CONDITIONS. THE LOGISTICS CLUSTER CANNOT GUARANTEE THE ACCURACY OR COMPLETENESS OF THE INFORMATION DISPLAYED AND ACCEPTS NO LIABILITY FOR RELIANCE ON THE DATA. PLEASE TAKE CARE TO VERIFY THE INFORMATION BEFORE USE.

