

# SOUTH SUDAN

December 2016



MONTHLY FIGURES

**26** Destinations reached

**165** Number of requests completed

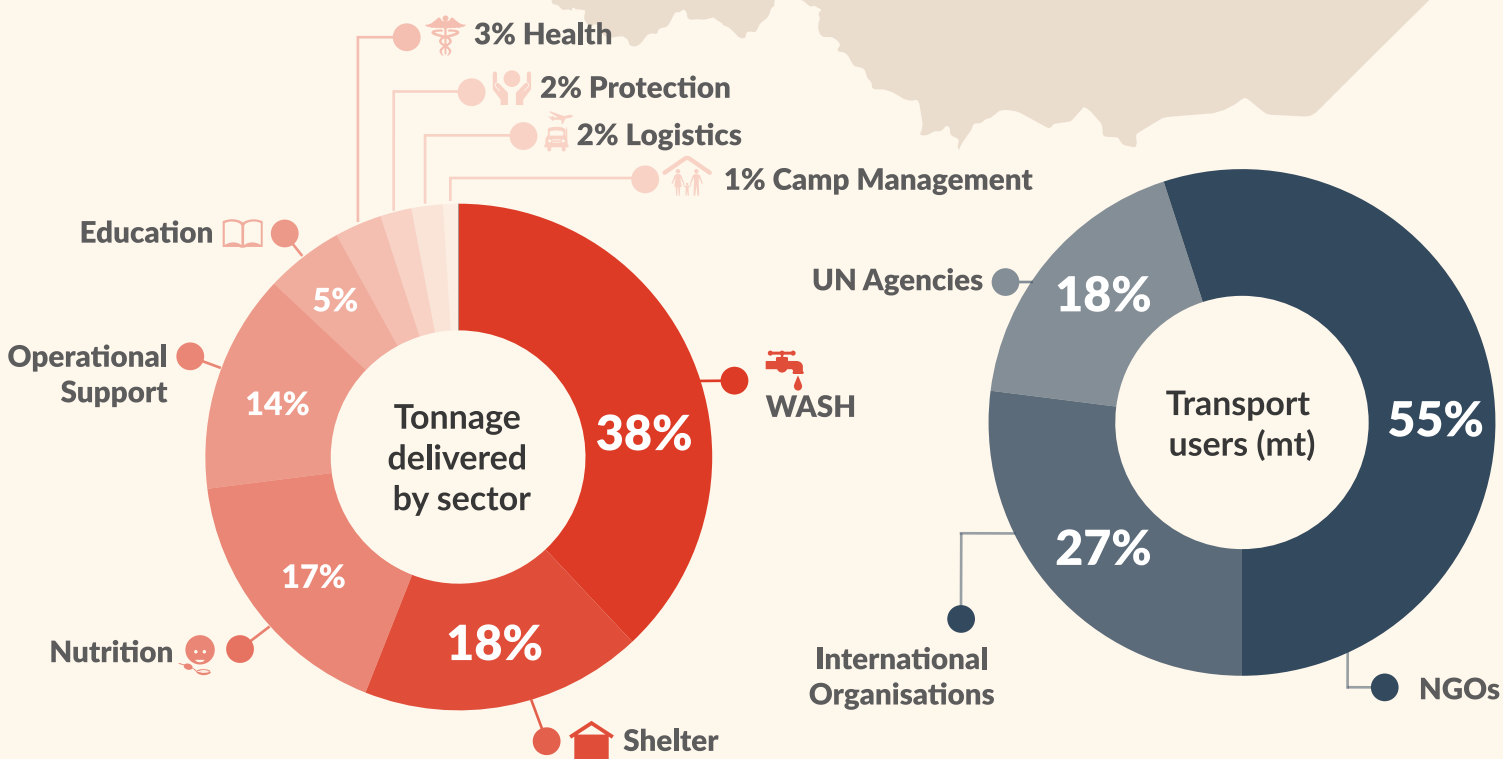
**782** Transportation facilitated (MT): air, barge

**118** Organisations supported



**5 days**

Average response time of key cargo to other locations



**170 mt** by helicopter

**406 mt** by fixed wing

**206 mt** by barge

**2** convoys coordinated\*

\*JUBA-RUMBEK-WAU-AWEIL-ABIEMNHOM  
\*JUBA-MUNDRI

## Funding Situation Special Operation 200778

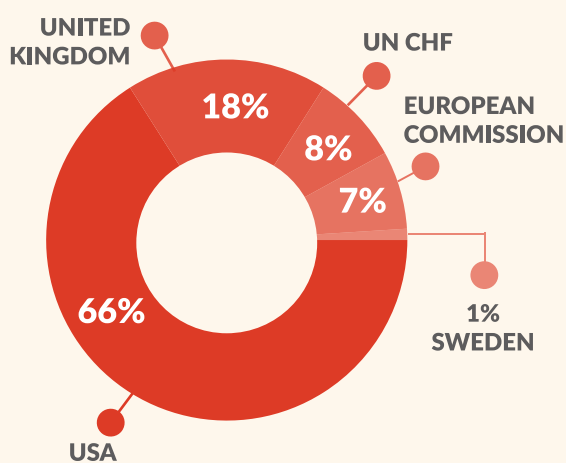
January 2016 to December 2016

**US\$ 26,185,095**  
Funding requirement

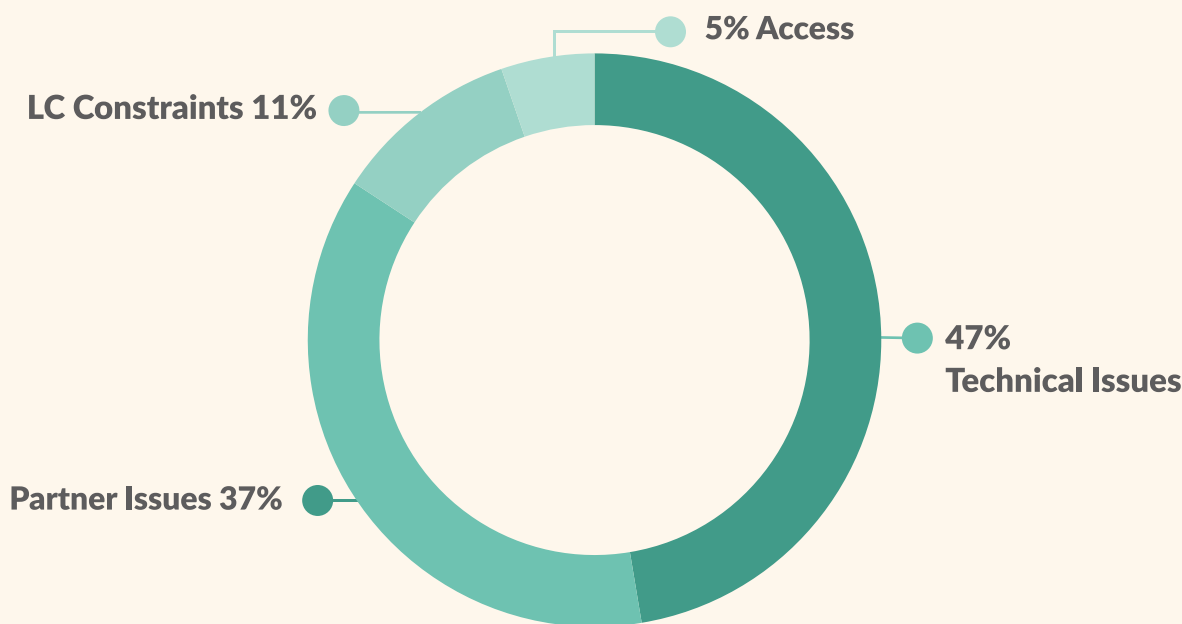
**100%**  
Resourced

A downward budget revision was approved in October. This is reflected in the figures presented here.

## Main Donors



## 19 Incidents Resulting in the Cancellation of Planned Flights (Lost Rotations)



[HTTP://LOGCLUSTER.ORG/OPS/SSD11A](http://logcluster.org/ops/ssd11a)

\*No priority locations for the month of November

The Logistics Cluster is led by



Information represented in this document is based on the most accurate data currently available from the Field Logistics Cluster staff supporting the emergency response operation. It may be revised or updated as new, or more complete data becomes available.