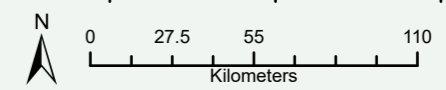
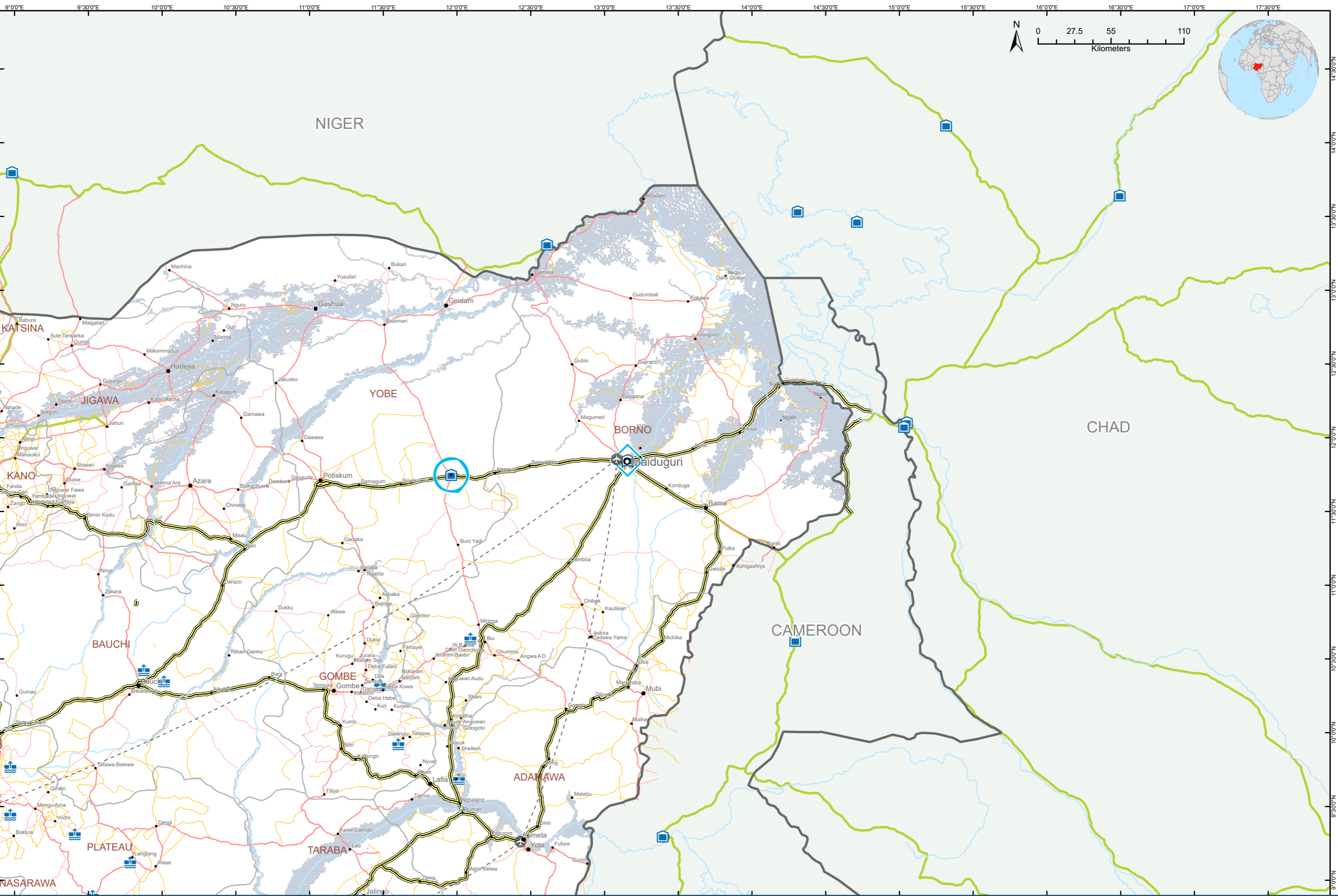


Nigeria

Flood Propensity Map (100 - year return period)

SAVING LIVES
CHANGING LIVES



Date Created: 15 Mar 2023
 Contact: hq.gis@wfp.org
 Website: www.wfp.org
 Prepared by: HQ GIS, WFP Emergency
 Map Reference: NGA_OP_LogisticsOverview_flood_exposure_A3L_20230313

- | | | | | |
|---------------------|------------------|----------------------|--------------------|----------------------------|
| ○ Major Town | □ Country Office | ✈ UNHAS connection | - - - UNHAS routes | — Tertiary road |
| ● Intermediate Town | ◇ Area Office | ⚓ Port | == Highway | — International boundaries |
| • Small Town | ○ Sub Office | 🌊 Dam | — Primary road | — River |
| • Village | 🏠 Warehouse | — Road supply routes | — Secondary road | ■ Flood propensity area |

Data sources: WFP, UNMap, Ocha, GeoNames - Flood propensity (100-year return period): JRC ©OpenStreetMap contributors

The designations employed and the presentation of material in the map(s) do not imply the expression of any opinion on the part of WFP concerning the legal or constitutional status of any country, territory, city or sea, or concerning the delimitation of its frontiers or boundaries.