
LOCATION	Remote meeting
DATE	12 June 2020
CHAIR	Pacific Logistics Cluster
PARTICIPANTS	Australia Department of Foreign Affairs and Trade (DFAT), International Federation of Red Cross and Red Crescent Societies (IFRC), New Zealand Ministry of Foreign Affairs and Trade (MFAT), Pacific Community (SPC), Pacific Islands Forum Secretariat (PIFS), Save the Children, United Nations Conference on Trade and Development (UNCTAD), United Nations Office for Project Services (UNOPS), United Nations Population Fund (UNFPA), United Nations Children's Fund (UNICEF), World Health Organization (WHO), World Food Programme (WFP), World Vision
ACTION POINTS	<ul style="list-style-type: none">• Pacific Logistics Cluster to share flow diagram of the WHO Supply Portal and the WFP Emergency Service Marketplace (Diagram included further below in the present minutes).• Pacific Logistics Cluster to share link to WHO ports of entry restrictions monitoring spreadsheet.• Save the Children to share results of the ongoing reassessment of their procurement and supply chain.
AGENDA	<ol style="list-style-type: none">1. Updates from partners (COVID-19 and Tropical Cyclone Harold)2. Australian Department of Foreign Affairs and Trade update – Pacific Corridor3. Information regarding travel restrictions

1. Updates from partners (COVID-19 and Tropical Cyclone Harold)

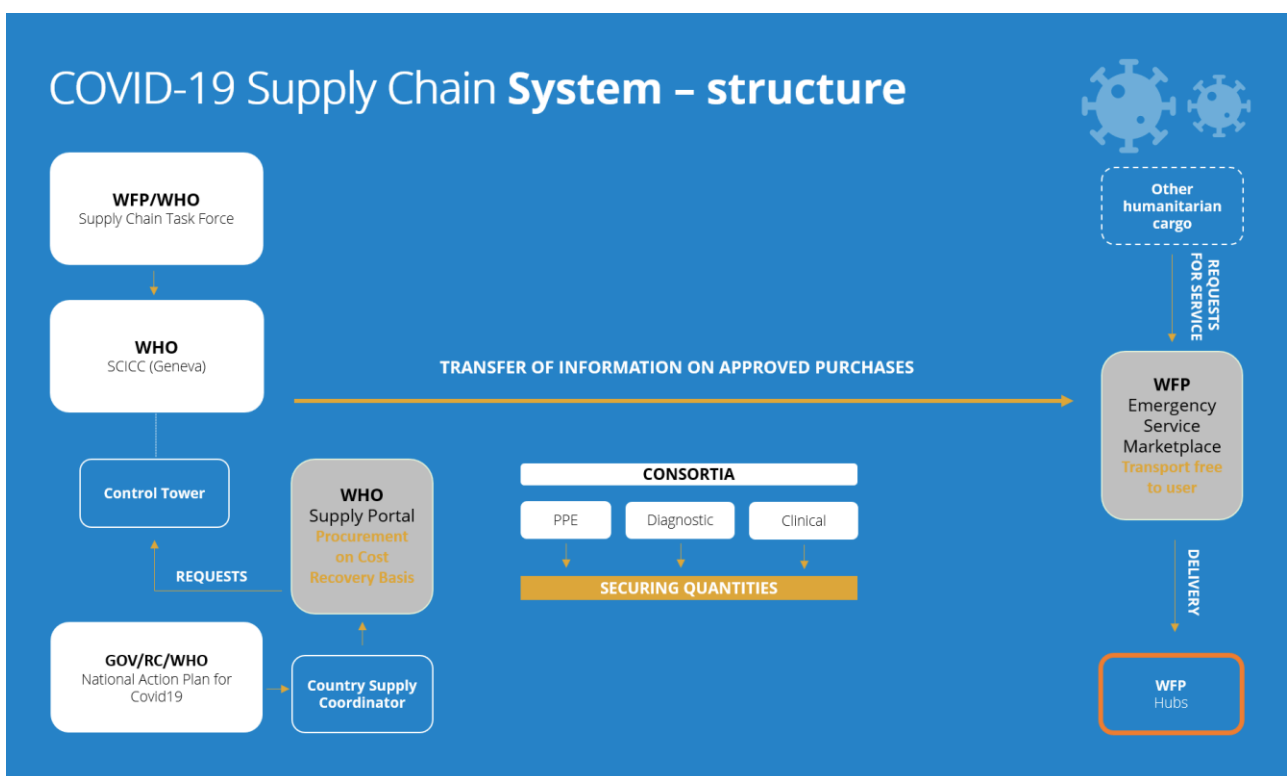
COVID-19

- The [WHO Supply Portal](#) (SP) and the [WFP Emergency Service Marketplace](#) (ESM) allow the expertise and capacities of the two agencies to be fully utilized for the COVID-19 global response. Through these two platforms, humanitarian organizations can submit their requests for supply (SP) and transport (ESM) of COVID-19 related items. Requests received are then consolidated and matched with available supplies and cargo transport services.
- Requests for COVID-19 items (personal protective equipment, diagnostics and clinical items) made through the nominated supply coordinator (Dominique Frankenne of WHO for the Pacific) are validated

against 3-month needs and funding sources under national action plans, matched with available supplies and then ordered all through the WHO SP. This procurement service is provided on a cost-recovery basis.

- Information on procurements through the WHO SP is transferred to the WFP ESM for free-to-user transport (upon availability) of the items to ports of entry for reception and final distribution by the requesting parties. Requests to transport other humanitarian cargo are also accepted by the WFP ESM although COVID-19 related cargo take first priority.

The interaction of the two systems is illustrated by the the following:



Source: WFP – Supply Chain

- IFRC is receiving some 30,000 surgical masks in Suva, Fiji to be distributed across Pacific national societies – support from the Pacific Logistics Cluster may be requested.
- There is a significant amount of COVID-19 related cargo for UNICEF and WHO currently in transit in Brisbane. The Pacific Logistics Cluster will try to facilitate transport to final destinations. where appropriate.
- The third meeting of the PIFS regional task force ended with the endorsement of four of the five protocols concerning technical team deployments, diplomatic clearances, immigration, repatriation and customs for the Pacific Humanitarian Pathway. Endorsed protocols will be escalated to the ministerial

group for its endorsement. The protocol on customs has undergone revision with Australia and New Zealand customs organizations. The ministerial group is meeting on 17 June.

Tropical Cyclone Harold

- There are no significant issues reported for Tropical Cyclone Harold response in both Vanuatu and Fiji.

Pacific Logistics Cluster Air Service Provision

- Instructions and Service Request Form (SRF) are now posted on the [operations webpage](#). Clearance processes will need to be managed with Pacific Islands Forum Secretariat and the individual Pacific countries.

General Shipping Industry Update

- The shipping industry in the region is reacting to reduced international trade due to COVID-19 even as quarantine restrictions begin to ease. These reactions include reduced sailings, blank sailings, consolidating routes, using smaller vessels and increasing charges for cargo coming on feeder services.

2. Australian Department of Foreign Affairs and Trade update – Pacific Corridor

- DFAT has given additional support to the Pacific COVID-19 response and the PIF Humanitarian Pathway in the form of AUD 3 million for the Pacific Logistics Cluster and the WFP Air Service, AUD 1 million for food security assessments, and AUD 3.5 million for the WHO COVID-19 Pacific Health Sector Support Plan.
- The additional logistics support complements DFAT's facilitation through commercial options of air movement of humanitarian cargo from Australia to the Pacific and Timor Leste including the recent delivery of Personal Protective Equipment (PPE) and GeneXpert cartridges in the region.
- DFAT is currently distributing some 65,000 WHO and UNICEF swab tests across the Pacific and organising a repatriation flight to Vanuatu which will also deliver PPE and swab tests.
- DFAT is also exploring the possibility of helping to move Hepatitis B 3 vaccines from India to Tonga, Vanuatu and Solomon Islands.
- DFAT sent out a request to its partners for expressions of interest to include other humanitarian items with the supplies already being transported from Brisbane to the region. This information is shared with the Pacific Logistics Cluster on a weekly basis.

3. Information regarding travel restrictions

- The [Global Logistics Cluster website](#) has a [COVID-19 page](#) with various links including the following:
 - [Wilhelmsen Global Port Restrictions Map](#)
 - [WFP World Travel Restrictions Map](#)

Meeting Minutes, 12 June 2020

Pacific Regional Logistics Cluster, Fiji



-
- WHO is also monitoring ports of entry restrictions in Pacific countries. The Pacific Logistics Cluster will share the link to this resource as well.

Contacts

Meaghan Barry

Logistics Cluster Coordinator

meaghan.barry@wfp.org

Mark Maulit

Information Management Officer

mark.maulit@wfp.org