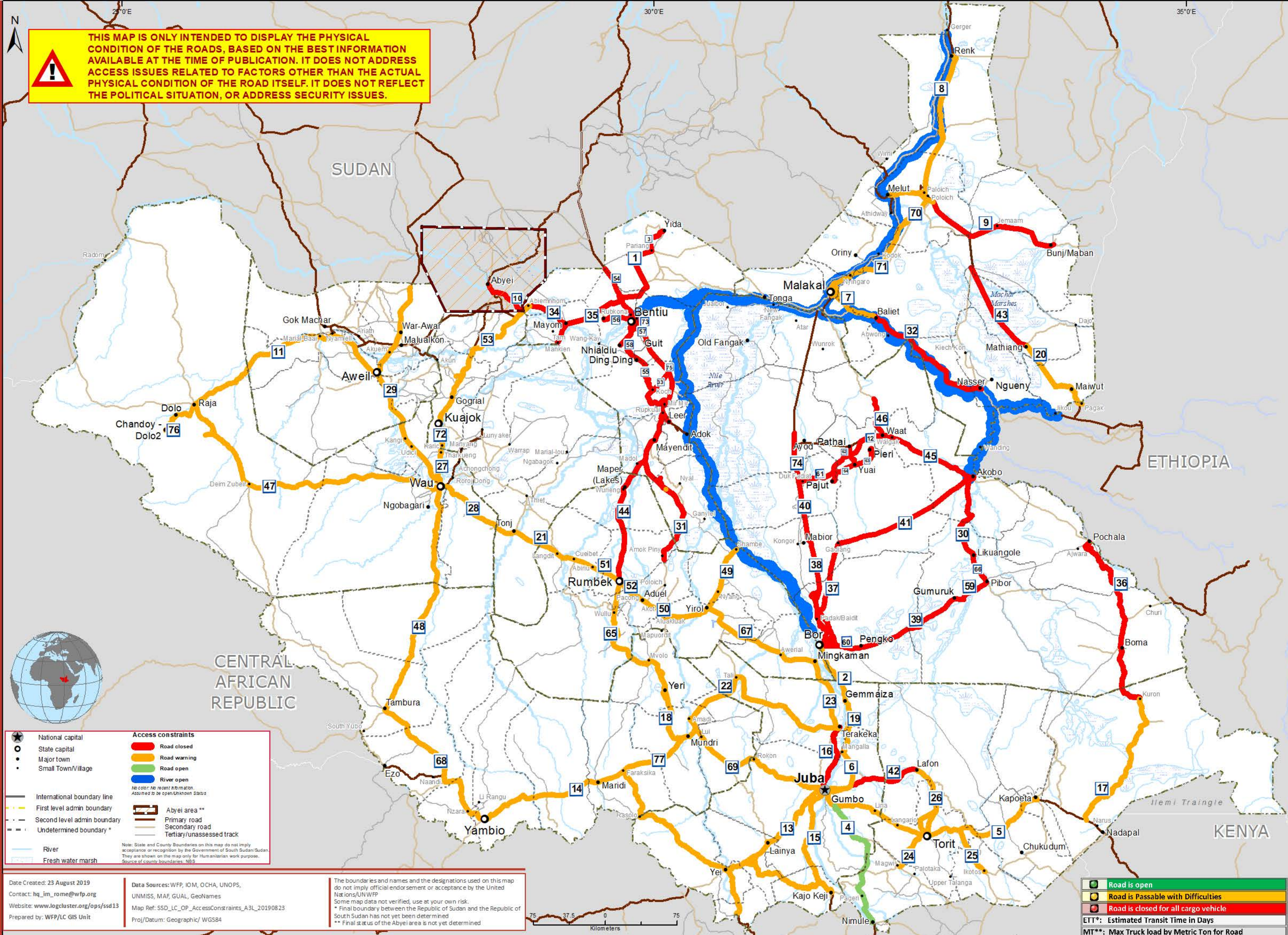


**THIS MAP IS ONLY INTENDED TO DISPLAY THE PHYSICAL CONDITION OF THE ROADS, BASED ON THE BEST INFORMATION AVAILABLE AT THE TIME OF PUBLICATION. IT DOES NOT ADDRESS ACCESS ISSUES RELATED TO FACTORS OTHER THAN THE ACTUAL PHYSICAL CONDITION OF THE ROAD ITSELF. IT DOES NOT REFLECT THE POLITICAL SITUATION, OR ADDRESS SECURITY ISSUES.**



No.	Road (From-To)	ETT*	MT**	Source	Date
4	Juba - Nimule		40MT	WFP	13-09-18
11	Aweil - Raja		20MT	WFP	15-06-17
52	Akot "Barhnaam bridge" - Rumbek		20MT	WFP	13-06-19
53	Alek - Abiemnhom		20MT	WFP	13-06-19
7	Baliet - Malakal		20MT	WFP	13-06-19
2	Gemeiza - Bor		20MT	WFP	13-06-19
13	Juba - Lainya - Yei		20MT	WFP	13-06-19
6	Juba - Mangalla		20MT	WFP	13-06-19
69	Juba - Mundri		20MT	WFP	13-06-19
5	Juba - Torit - Kapoeta		20MT	WFP	13-06-19
19	Mangalla - Gemeiza		20MT	WFP	13-06-19
8	Melut - Renk		20MT	WFP	13-06-19
67	Mingman - Yirol		20MT	WFP	13-06-19
18	Mundri - Yeri		20MT	WFP	13-06-19
51	Rumbek - Cueilbet		20MT	WFP	13-06-19
72	Thar Kueng - Alek		20MT	WFP	13-06-19
21	Tonj - Cueilbet		20MT	WFP	13-06-19
24	Torit - Magwi		20MT	WFP	13-06-19
29	Wau - Aweil		20MT	WFP	13-06-19
47	Wau - Raja		20MT	WFP	13-06-19
27	Wau - Thar Kueng		20MT	WFP	13-06-19
28	Wau - Tonj		20MT	WFP	13-06-19
65	Yeri - Rumbek		20MT	WFP	13-06-19
50	Yirol - Akot "Barhnaam bridge"		20MT	WFP	13-06-19
70	Kodok - Melut		20MT	WFP	13-06-19
15	Juba - Kajo Keji		20MT	WFP	15-06-17
71	Malakal - Kodok		20MT	WFP	03-08-18
77	Mundri - Maridi		10MT	WFP	31-05-19
14	Mundri - Yambio		20MT	WFP	18-04-19
17	Narus - Kuron		20MT	WFP	15-07-18
20	Pagak - Maiwut - Mathiang	2	20MT	LC	16-01-17
76	Raja - Chandoy/Dolo2		10MT	LC	04-04-19
23	Terakeka - Mingman			WFP	19-07-19
22	Terakeka - Tali - Mundri		20MT	WFP	02-02-18
25	Torit - Ikotos		20MT	WFP	15-07-18
26	Torit - Lafon		20MT	WFP	15-07-18
48	Wau - Tambura		20MT	WFP	18-01-19
68	Yambio - Tambura		20MT	WFP	12-07-18
49	Yirol - Shambe		20MT	WFP	31-08-18
10	Abyei - Abienhom			WFP	13-06-19
30	Akobo - Likuangole			WFP	19-05-19
31	Amok Piny - Madol			IOM	22-04-16
32	Baliet - Nasser			WFP	17-06-16
73	Bentiu - Dhorboor			WFP	13-06-19
58	Bentiu - Dingding			WFP	13-06-19
56	Bentiu - Kaljak			WFP	13-06-19
35	Bentiu - Mayom - Mankiem			WFP	13-06-19
1	Bentiu - Pariang			WFP	13-06-19
37	Bor - Gadiang			WFP	15-06-17
38	Bor - Mabior			WFP	28-06-19
60	Bor - Pengko			WFP	17-05-19
57	Dhorboor - Guit			WFP	13-06-19
55	Dingding - Leer			WFP	13-06-19
74	Duk Fadiat - Ayod			WFP	21-06-19
61	Duk Fadiat - Yuai			WFP	21-06-19
41	Gadiang - Akobo			WFP	14-10-16
33	Guit - Koch			WFP	13-06-19
75	Guit - Leer			WFP	13-06-19
59	Gumuruk - Pibor			WFP	17-05-19
42	Juba - Lafon			WFP	28-11-16
16	Juba - Terakeka			WFP	16-08-19
36	Kuron - Pochala			WFP	26-05-17
40	Mabior - Duk Fadiat			WFP	28-06-19
43	Mathiang - Guel Guk			WFP	16-09-16
34	Mayom - Abiemnhom			WFP	13-06-19
9	Melut - Bunj/Maban			WFP	12-07-19
39	Pengko - Gumuruk			WFP	17-05-19
66	Pibor - Likuangole			WFP	19-05-19
54	Rubkoona - to the Border			WFP	13-06-19
44	Rumbek - Mayendit - Leer			WFP	08-06-18
45	Walgak - Akobo			WFP	21-06-19
46	Walgak - Lankien			WFP	21-06-19
64	Yuai - Pajut			WFP	21-06-19
62	Yuai - Pathai			WFP	21-06-19
63	Yuai - Pieri			WFP	21-06-19
3	Yida - Pariang			WFP	13-06-19
12	Yuai - Waat			WFP	21-06-19

**Access constraints**

- Road closed
- Road warning
- Road open
- River open

**Legend**

- National capital
- State capital
- Major town
- Small Town/Village
- International boundary line
- First level admin boundary
- Second level admin boundary
- Undetermined boundary \*
- River
- Fresh water marsh
- Abyei area \*\*
- Primary road
- Secondary road
- Tertiary/unassessed track

Note: State and County boundaries on this map do not imply acceptance or recognition by the Government of South Sudan/Sudan. They are shown on the map only for Humanitarian work purpose. Source of county boundaries: NBS

Date Created: 23 August 2019  
 Contact: [hq\\_fm\\_rome@wfp.org](mailto:hq_fm_rome@wfp.org)  
 Website: [www.logcluster.org/ops/ssd13](http://www.logcluster.org/ops/ssd13)  
 Prepared by: WFP/LC GIS Unit

Data Sources: WFP, IOM, OCHA, UNOPS, UNMISS, MAF, GUAL, GeoNames  
 Map Ref: SSD\_LC\_OP\_AccessConstraints\_A3L\_20190823  
 Proj/Datum: Geographic/ WGS84

The boundaries and names and the designations used on this map do not imply official endorsement or acceptance by the United Nations/WFP  
 \* Some map data not verified, use at your own risk.  
 \*\* Final boundary between the Republic of Sudan and the Republic of South Sudan has not yet been determined  
 \*\*\* Final status of the Abyei area is not yet determined

**USAID**  
**UKaid**  
 from the British people  
**EUROPEAN COMMISSION**  
 Humanitarian Aid  
**LOGISTICS CLUSTER**  
**WFP**  
**World Food Programme**