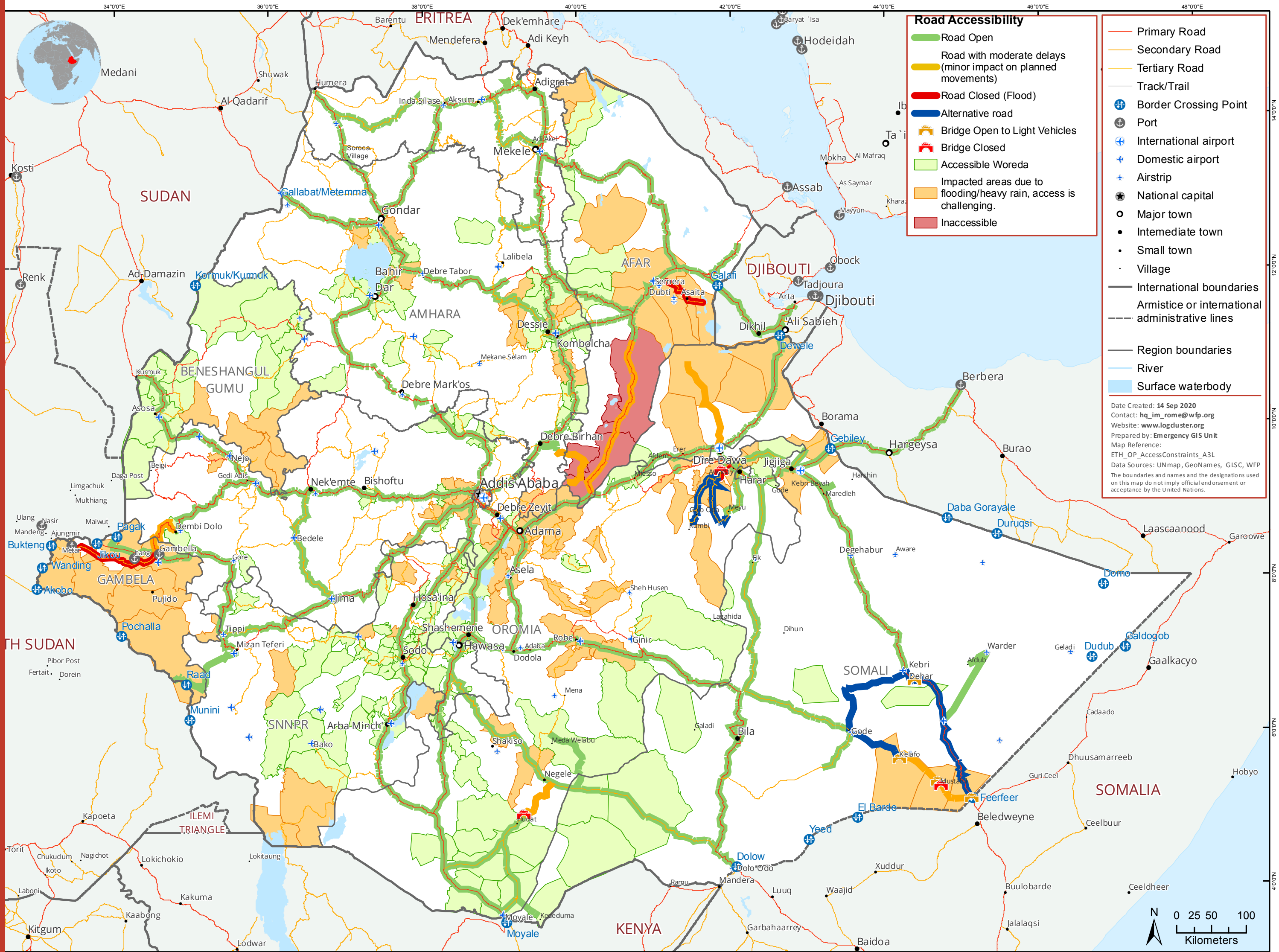


**ETHIOPIA**  
Physical Road Constraints Map as of 2 October 2020



**Road Accessibility**

- Road Open
- Road with moderate delays (minor impact on planned movements)
- Road Closed (Flood)
- Alternative road
- Bridge Open to Light Vehicles
- Bridge Closed
- Accessible Woreda
- Impacted areas due to flooding/heavy rain, access is challenging.
- Inaccessible

- Primary Road
- Secondary Road
- Tertiary Road
- Track/Trail
- Border Crossing Point
- Port
- International airport
- Domestic airport
- Airstrip
- National capital
- Major town
- Intermediate town
- Small town
- Village
- International boundaries
- Armistice or international administrative lines
- Region boundaries
- River
- Surface waterbody

Date Created: 14 Sep 2020  
 Contact: [hq\\_im\\_rome@wfp.org](mailto:hq_im_rome@wfp.org)  
 Website: [www.logduster.org](http://www.logduster.org)  
 Prepared by: Emergency GIS Unit  
 Map Reference: ETH\_OP\_AccessConstraints\_A3L  
 Data Sources: UN map, GeoNames, GLSC, WFP  
 The boundaries and names and the designations used on this map do not imply official endorsement or acceptance by the United Nations.

