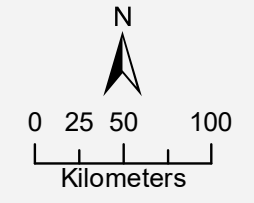
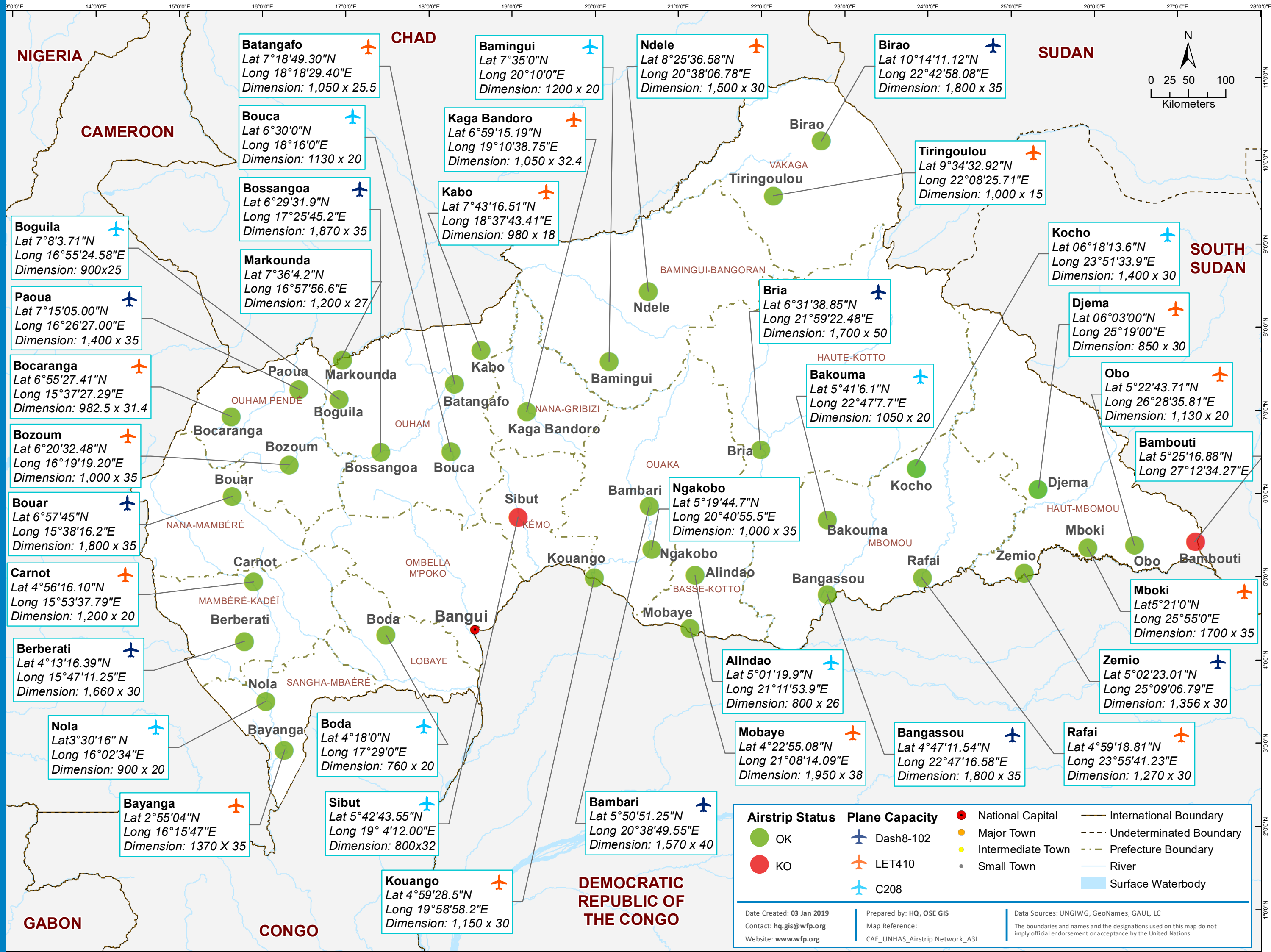


# Central African Republic Airstrip Network, January 2019



Airstrip Name	Coordinates (Lat/Long)	Dimensions	Status	Plane Capacity
Batangafô	Lat 7°18'49.30"N Long 18°18'29.40"E	1,050 x 25.5	OK	LET410
Bouca	Lat 6°30'0"N Long 18°16'0"E	1130 x 20	OK	Dash8-102
Bossangoa	Lat 6°29'31.9"N Long 17°25'45.2"E	1,870 x 35	OK	Dash8-102
Markounda	Lat 7°36'4.2"N Long 16°57'56.6"E	1,200 x 27	OK	Dash8-102
Bogouila	Lat 7°8'3.71"N Long 16°55'24.58"E	900x25	OK	Dash8-102
Paoua	Lat 7°15'05.00"N Long 16°26'27.00"E	1,400 x 35	OK	Dash8-102
Bocaranga	Lat 6°55'27.41"N Long 15°37'27.29"E	982.5 x 31.4	OK	LET410
Bozoum	Lat 6°20'32.48"N Long 16°19'19.20"E	1,000 x 35	OK	LET410
Bouar	Lat 6°57'45"N Long 15°38'16.2"E	1,800 x 35	OK	Dash8-102
Carnot	Lat 4°56'16.10"N Long 15°53'37.79"E	1,200 x 20	OK	LET410
Berberati	Lat 4°13'16.39"N Long 15°47'11.25"E	1,660 x 30	OK	Dash8-102
Nola	Lat 3°30'16" N Long 16°02'34"E	900 x 20	OK	Dash8-102
Bayanga	Lat 2°55'04"N Long 16°15'47"E	1370 X 35	OK	LET410
Boda	Lat 4°18'0"N Long 17°29'0"E	760 x 20	OK	Dash8-102
Sibut	Lat 5°42'43.55"N Long 19° 4'12.00"E	800x32	OK	Dash8-102
Kouango	Lat 4°59'28.5"N Long 19°58'58.2"E	1,150 x 30	OK	LET410
Bamingui	Lat 7°35'0"N Long 20°10'0"E	1200 x 20	OK	Dash8-102
Kaga Bandoro	Lat 6°59'15.19"N Long 19°10'38.75"E	1,050 x 32.4	OK	LET410
Kabo	Lat 7°43'16.51"N Long 18°37'43.41"E	980 x 18	OK	LET410
Ndele	Lat 8°25'36.58"N Long 20°38'06.78"E	1,500 x 30	OK	LET410
Birao	Lat 10°14'11.12"N Long 22°42'58.08"E	1,800 x 35	OK	Dash8-102
Tiringoulou	Lat 9°34'32.92"N Long 22°08'25.71"E	1,000 x 15	OK	LET410
Bria	Lat 6°31'38.85"N Long 21°59'22.48"E	1,700 x 50	OK	Dash8-102
Bakouma	Lat 5°41'6.1"N Long 22°47'7.7"E	1050 x 20	OK	Dash8-102
Ngakobo	Lat 5°19'44.7"N Long 20°40'55.5"E	1,000 x 35	OK	Dash8-102
Alindao	Lat 5°01'19.9"N Long 21°11'53.9"E	800 x 26	OK	Dash8-102
Mobaye	Lat 4°22'55.08"N Long 21°08'14.09"E	1,950 x 38	OK	LET410
Bangassou	Lat 4°47'11.54"N Long 22°47'16.58"E	1,800 x 35	OK	Dash8-102
Rafai	Lat 4°59'18.81"N Long 23°55'41.23"E	1,270 x 30	OK	LET410
Zemio	Lat 5°02'23.01"N Long 25°09'06.79"E	1,356 x 30	OK	Dash8-102
Mboki	Lat 5°21'0"N Long 25°55'0"E	1700 x 35	OK	LET410
Obo	Lat 5°22'43.71"N Long 26°28'35.81"E	1,130 x 20	OK	LET410
Bambouti	Lat 5°25'16.88"N Long 27°12'34.27"E		OK	LET410
Djema	Lat 06°03'00"N Long 25°19'00"E	850 x 30	OK	LET410
Kocho	Lat 06°18'13.6"N Long 23°51'33.9"E	1,400 x 30	OK	Dash8-102

**Airstrip Status**

- OK
- KO

**Plane Capacity**

- ✈ Dash8-102
- ✈ LET410
- ✈ C208

**Other Symbols**

- National Capital
- Major Town
- Intermediate Town
- Small Town
- International Boundary
- - - Undetermined Boundary
- · - Prefecture Boundary
- River
- Surface Waterbody

Date Created: 03 Jan 2019  
 Contact: [hq.gis@wfp.org](mailto:hq.gis@wfp.org)  
 Website: [www.wfp.org](http://www.wfp.org)

Prepared by: HQ, OSE GIS  
 Map Reference:  
 CAF\_UNHAS\_Airstrip Network\_A3L

Date Sources: UNGIWG, GeoNames, GAUL, LC  
 The boundaries and names and the designations used on this map do not imply official endorsement or acceptance by the United Nations.

