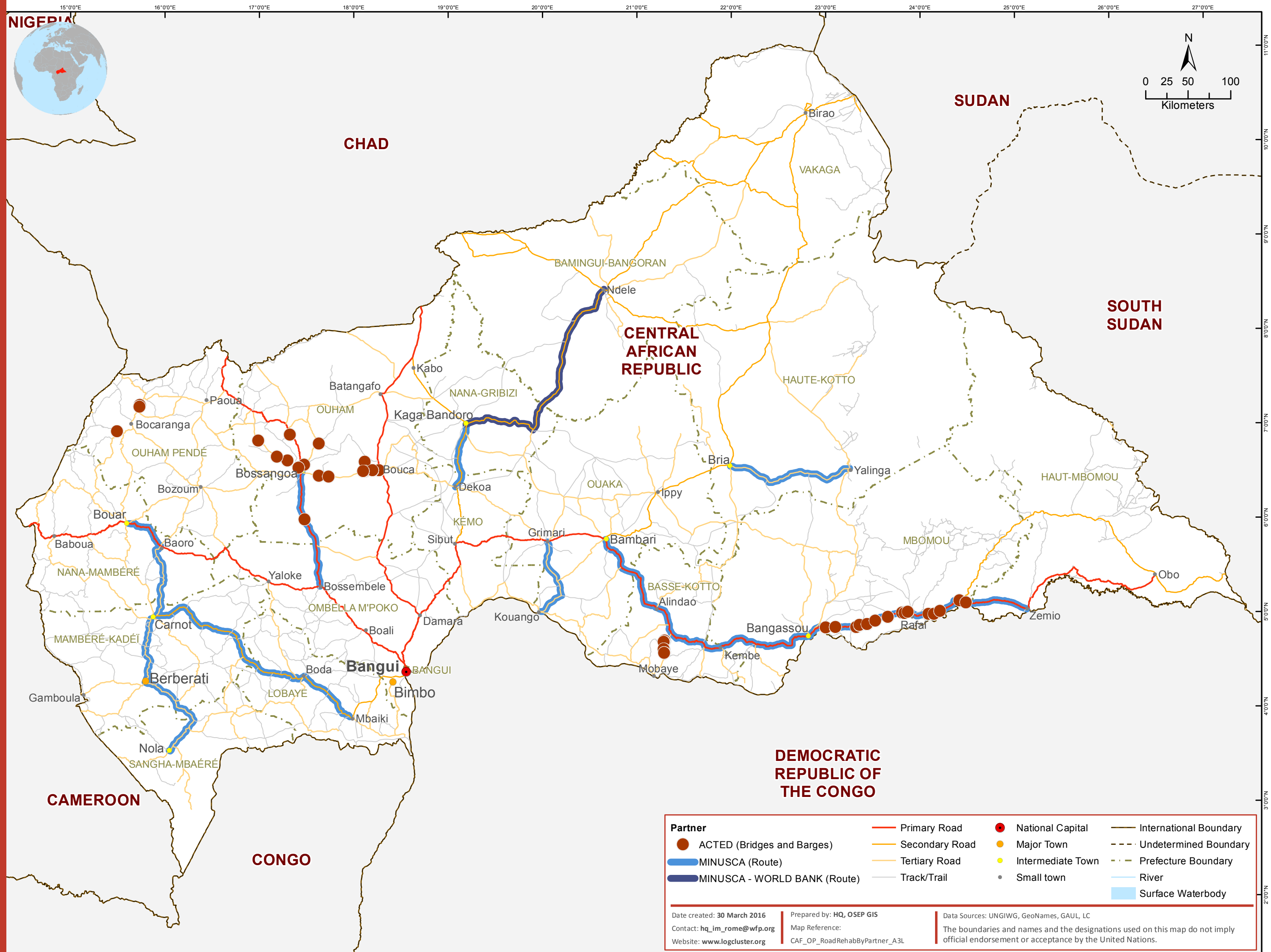


Central African Republic  
Infrastructure Rehabilitation Map by Organisation, March 2016



<b>Partner</b>	Primary Road	National Capital	International Boundary
● ACTED (Bridges and Barges)	Secondary Road	● Major Town	- - - Undetermined Boundary
■ MINUSCA (Route)	Tertiary Road	● Intermediate Town	- - - Prefecture Boundary
■ MINUSCA - WORLD BANK (Route)	Track/Trail	● Small town	— River
			■ Surface Waterbody

Date created: 30 March 2016  
 Contact: [hq\\_im\\_rome@wfp.org](mailto:hq_im_rome@wfp.org)  
 Website: [www.logcluster.org](http://www.logcluster.org)

Prepared by: HQ, OSEP GIS  
 Map Reference:  
 CAF\_OP\_RoadRehabByPartner\_A3L

Data Sources: UNGIWG, GeoNames, GAUL, LC  
 The boundaries and names and the designations used on this map do not imply official endorsement or acceptance by the United Nations.

