



Lost NFI distribution capacity - West Darfur (March 2009)

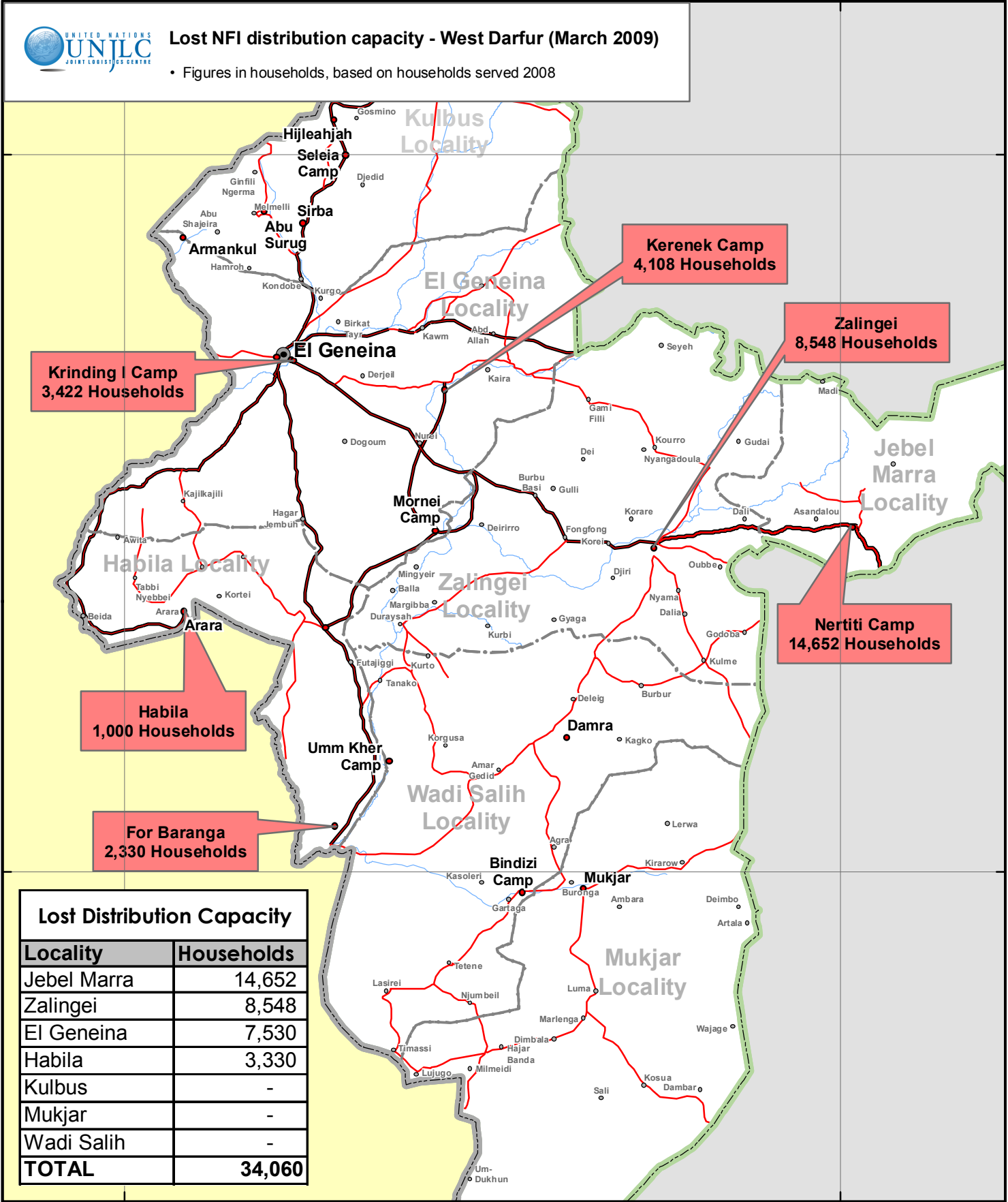
• Figures in households, based on households served 2008

14°00'N

14°00'N

12°00'N

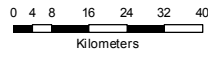
12°00'N



Lost Distribution Capacity	
Locality	Households
Jebel Marra	14,652
Zalingei	8,548
El Geneina	7,530
Habila	3,330
Kulbus	-
Mukjar	-
Wadi Salih	-
TOTAL	34,060



Lost NFI distribution capacity West Darfur (March 2009)



Scale: 1:1,600,000 at A4 Paper Size

- Western Darfur Key Locations
- State Capital
- Primary Town
- Secondary Town
- Settlement/village
- Primary
- Secondary
- Tertiary
- Rivers
- International Boundary
- State Boundary
- County Boundary

UNJLC_SDN_768_WD
 Date Created: 19-March-2009
 Proj/Datum: Geographic/ WGS84

The boundaries and names and the designations used on this map do not imply official endorsement or acceptance by the United Nations. Some map data not verified. Use at your own risk. sudan.maps@unjlc.org; www.unjlc.org/sudan/maps

WARNING: Very little information is known about the roads of South Sudan. If you have information to contribute, please contact sudan.maps@unjlc.org.

