

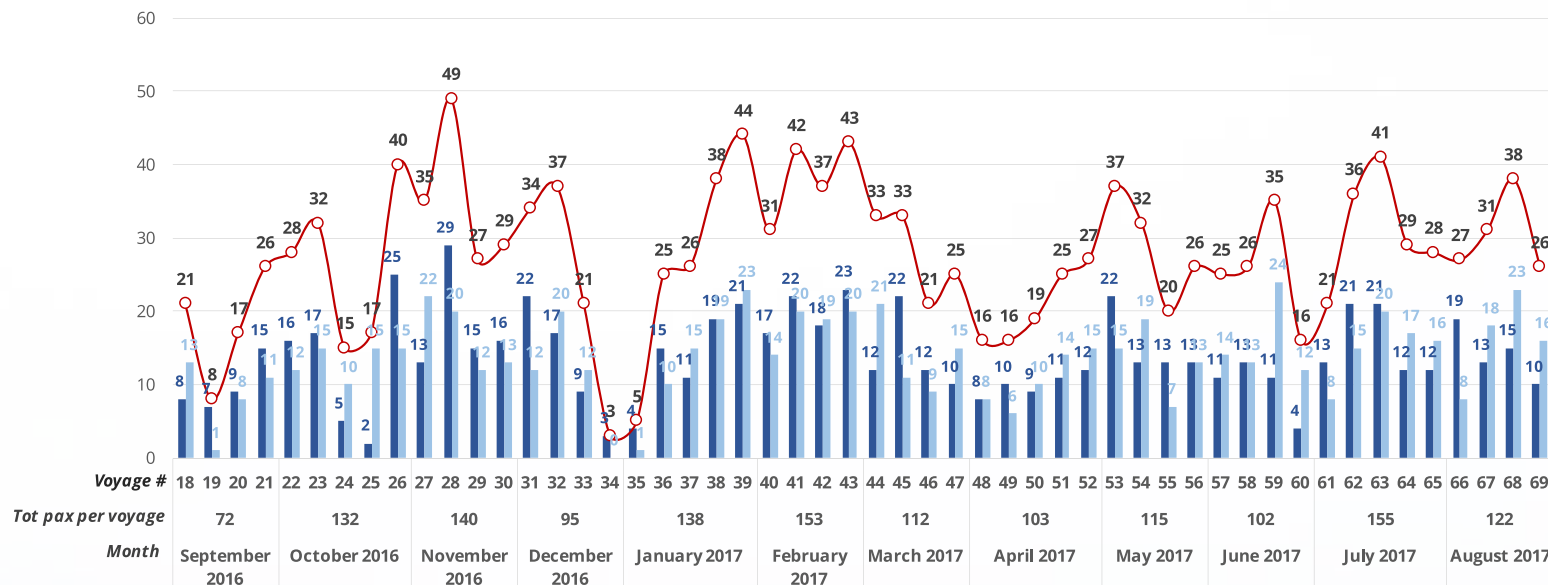
Background

The Logistics Cluster coordinates and facilitates passenger movement between Djibouti and Aden on a WFP-chartered vessel, which is also used for emergency rescue and evacuation purpose. Accommodation and cargo transportation are also facilitated on the same vessel by the Logistics Cluster. Since May 2016, a regular schedule and booking system have been in place, with weekly rotations between Djibouti and Aden. The schedule allows passengers to easily connect with UNHAS flights between Djibouti and Sana'a.

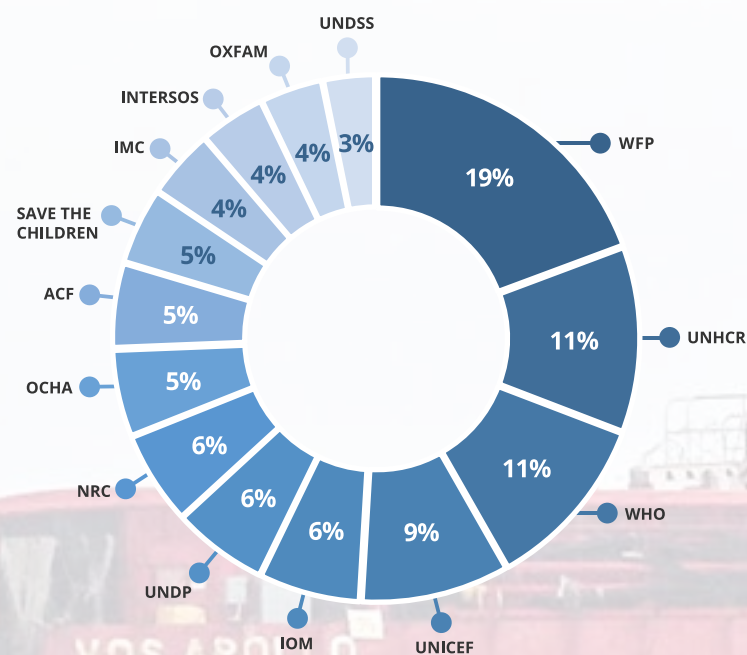
General overview

- **69 rotations** with **1,650 passengers** transported between Djibouti and Aden on behalf of **37 service users (14 UN agencies, 19 INGOs, 4 NNGOs).**
- **48% average utilisation rate** (maximum capacity 25 passengers per leg/50 per voyage).
- Thanks to the contributions received by DFID, Canada, ECHO and Germany, WFP and the Logistics Cluster will be able to extend the service until **the end of 2017.**

Total passenger movements



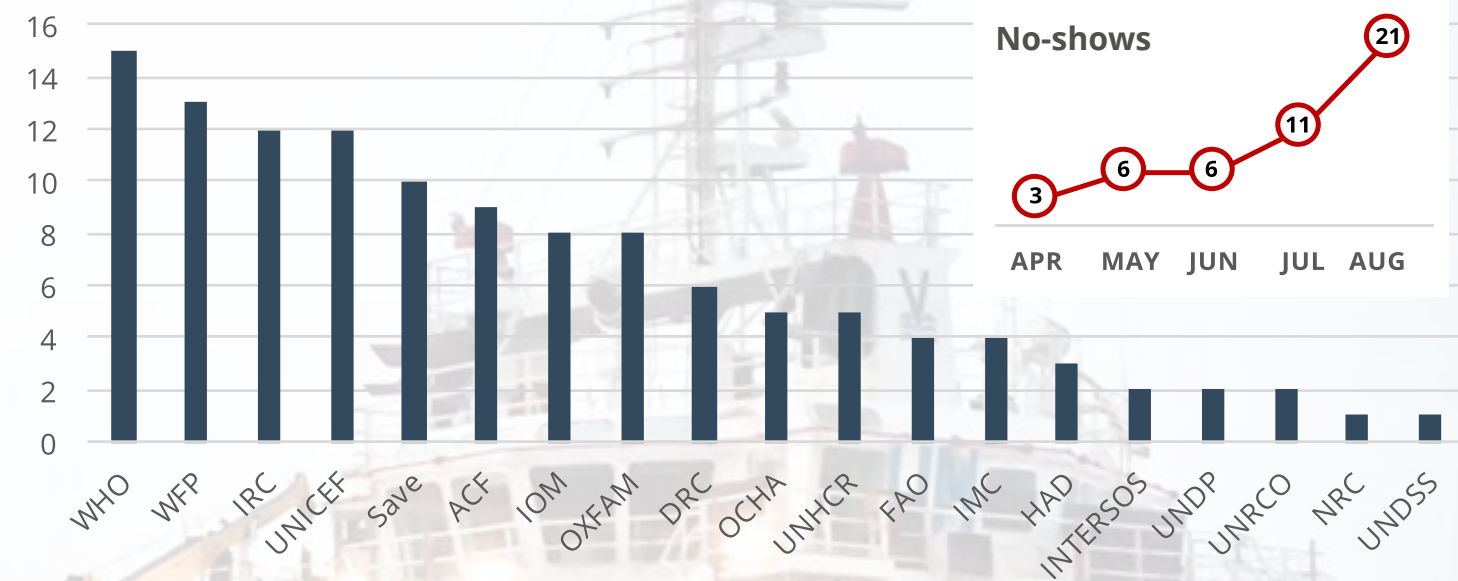
Utilisation by agency (Top 15 users)



August overview

- **122 passengers** on behalf of **19 organisations** have been transported between Djibouti and Aden;

Passenger per agency - August 2017 (top 15 users)



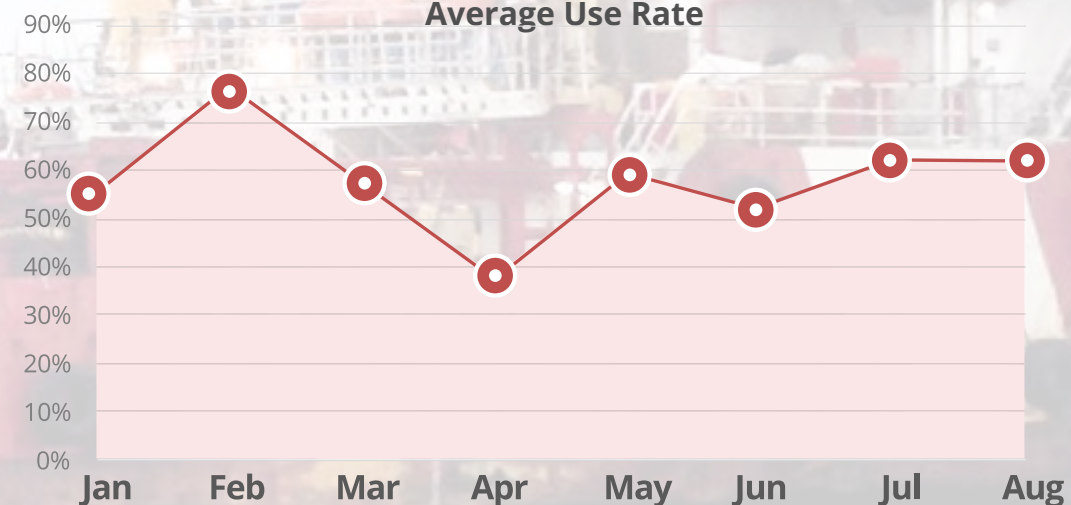
61%

UTILISATION RATE

17,2%

NO-SHOWS

Average Use Rate



More information can be found at <http://www.logcluster.org/ops/yem10a>

Vos Apollo is funded by:



Contacts

Passenger requests

Christophe Morard	Logistics Cluster Coordinator	co_yem_passenger@wfp.org
Sasha Hafez	WFP Shipping Officer	sasha.hafez@wfp.org
Carlotta Negri	Logistics Cluster Officer	carlotta.negri@wfp.org

Monthly cost **US\$ 350,000**

Total cost **US\$ 4,200,000**

Note that, as of April, data is collected based on the number of passengers per leg, and not per round trip.