

OVERVIEW

This document provides an overview of the Logistics Cluster’s South Sudan River Movement strategy for 2020. The cluster plans to achieve logistics and cost efficiencies by continuing the transport modality shift undertaken in 2018 and 2019, which aims to decrease reliance on air transport and capitalise on road and river transport modalities. For river transport, humanitarian cargo will continue to be delivered along the river Nile, while expanding operations along the El Zharaf and Sobat rivers.

The Logistics Cluster operates with a **mix of barges (capacity from 600 up to 2000 mt)** and **boats (capacity from 30 up to 200 mt)**, allocated depending on requests and destinations.

- Cargo to be delivered along the river Nile will be transported with the barge ex-Bor/Malakal/Renk.
- Cargo to be delivered along the Sobat river will be first transported ex-Bor with the barge and then transhipped into boats in Malakal.
- Cargo to be delivered along El Zharaf river will be transported ex-Bor with boat convoys.

KEY INFORMATION FOR RIVER TRANSPORT USERS

Cargo Delivery

- **The Logistics Cluster will no longer fly cargo to any locations reachable by river.** In case of emergency, the cluster will remain flexible and may use air transport on an exceptional basis.
- During the peak of dry season, **water levels along Sobat river are expected to reduce from February to May.** The cluster will explore using smaller sized boats while water levels are low, however, organisations are encouraged to preposition their cargo in these locations before this period.
- When cargo needs to be delivered to any location on the rivers, the first step for any organisation is to submit a [Service Request Form](#) and pre-position their cargo to the Bor or Malakal Logistics Cluster warehouses. Organisations will be advised on a tentative timeline to deliver the cargo.
- When needed, the Logistics Cluster will coordinate with WFP to use their contracted river assets (boats and barges).
- The cargo delivery is a free-to-user service and procedures remain similar to the common air transport service, please consult the [Service Request Form User Instructions](#).

Operational Planning Adjustments:

- Putting into consideration the lead time for river movement, **organisations will need to adjust their re-supply schedules by prepositioning their requirements a minimum of 2 months in advance.** The Logistics Cluster will not fly any cargo to re-supply humanitarian organisations due to poor warehouse management.

The below table provides routes and approximate delivery times for partners to plan ahead, pre-position, and avoid stock-outs.

Route	Possible Stops	Movement Frequency	Approximate Time en route after departure
Bor - Renk	Tonga, New Fangak, Atar 3/Diel, Fakwar, Canal, Malakal, Akoka, Kodok, Melut Kaka and Wadakona	Monthly	2 weeks to furthest destination
Renk - Bor	As above	Ad hoc	As above
Malakal – Jikmir (Sobat River)	Canal, Dolieb, Khor Fulus, Nagdiar, Baliat, Adong, Abwong, Gel Achiel, Riangnom, Chuil, Dome, Duk, Ying, Ulang, Nassir, Mandeng, Jikmir	Monthly	1 week
Bor – Old Fangak	Wan Macher, Menime, and Haat	Monthly	3 days
Malakal - Tonga	Atar 3/Diel, Fakwar, New Fangak	Monthly	1 day

<https://logcluster.org/ops/ssd11a>

This is a live document and is only intended to display tentative river movement plans. The Logistics Cluster will be coordinating river movement when physical access permits.

- If there is a lack of storage capacity to pre-position cargo in any location along the rivers, **the Logistics Cluster has Mobile Storage Units available for loan**. Organisations are encouraged to contact the cluster at southsudan.clustercargo@wfp.org in case of interest. Priority will be given to organisations willing to manage MSUs as common storage facilities versus individual/sole use.

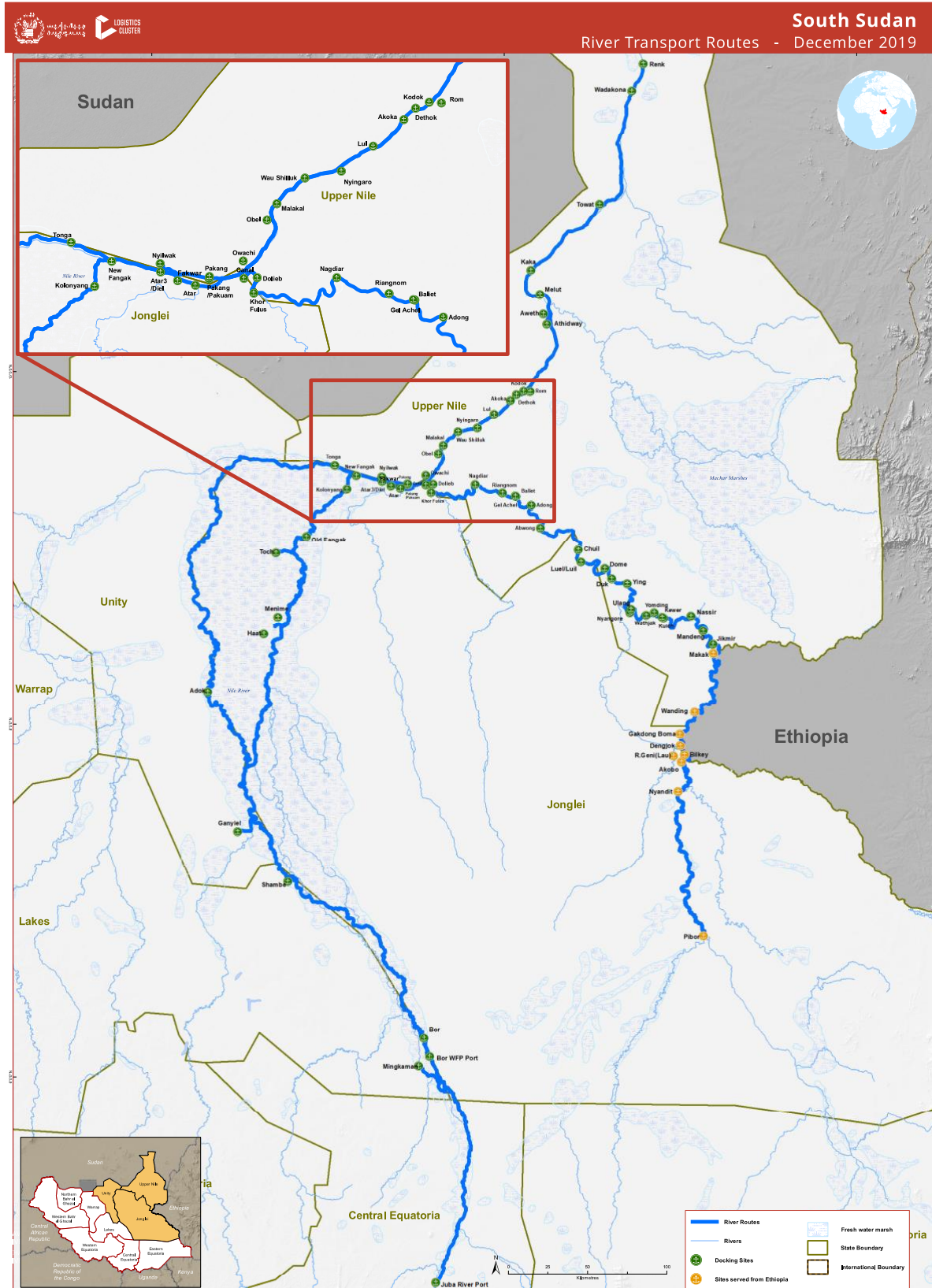
Available Information Management Tools

- The Logistics Cluster has designed a [River Transport Map](#) (below annex) outlining current river movement routes and possible locations for expansion. More locations can be planned based on demand. Contact the Logistics Cluster for enquiries.
- The Logistics Cluster has designed a [river movement schedule](#) to enable partners to undertake planning and prepositioning. The schedule is available on the Logistics Cluster website.
- The Weekly Transport Plan is also published every Monday on the Logistics Cluster website to provide information on upcoming river movements to partners.
- The above-mentioned information management products are updated on a regular basis and are published on the [Logistics Cluster South Sudan website](#).

Summary of Responsibilities:

Organisation Responsibilities	Logistics Cluster Responsibilities
<ol style="list-style-type: none"> 1. Submit accurate Service Request Forms (SRFs) 2. Pre-position cargo in Bor/Malakal; 3. Plan ahead – river operations have longer lead times compared to air and road; 4. Pre-position cargo for a minimum two-month intervention; 5. Organise and pay for offloading at destination (with exception of Malakal); 6. Load cargo in locations where the Logistics Cluster does not have presence; 7. Provide Relief and Rehabilitation (RRC) clearance; 8. Fill in the receipt details on the waybill at destination, sign and stamp. Give white copy to operator. 	<ol style="list-style-type: none"> 1. Announce schedules and register SRFs; 2. Provide estimated timeline for cargo delivery upon receipt of SRF; 3. Update organisations on schedules, dispatches, progress, and vessel arrivals; 4. Loading/Offloading in Bor & Malakal; 5. Cargo transshipment in Malakal for items destined to locations along the Sobat river; 6. Contract barge/boats; 7. Issue signed and stamped waybills indicating dispatch details; 8. Provide Joint Border Verification and Monitoring Mechanism (JBVMM) clearance

ANNEX 1 – River Transport Routes



Data Created: 05 Dec 2019 • Contact: Mohamed.ahmed@wfp.org
Website: www.logcluster.org • Prepared by: WFP/IC G15 Unit
Map Reference: 10212_C-River Transport Routes/10212011015

Data sources: WFP offices; WFP boundaries; OCHA; Roads; © OpenStreetMap Contributors • Populated places: GeoNames

The designations employed and the presentation of material in this map do not imply the expression of any opinion on the part of WFP concerning the legal or constitutional status of any country, territory, city or sea, or concerning the delimitation of its frontiers or boundaries. Some data has not yet been verified, use at your own risk. The boundary between the Republic of Sudan and the Republic of South Sudan has not yet been determined. Final status of Abyei area has not yet been determined.

© World Food Programme 2019

<https://logcluster.org/ops/ssd11a>

This is a live document and is only intended to display tentative river movement plans. The Logistics Cluster will be coordinating river movement when physical access permits.